

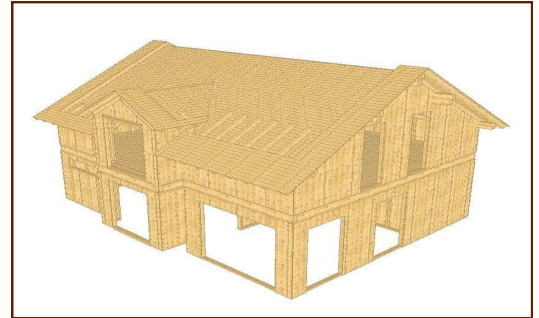
Viskon V5 3D-CAD/CAM



Roof - Wall - Machine

Flexibility & easy operation

- Works simultaneously in 2D and 3D
- Clearly structured upper layer with overview of dialogues
- Intuitive operation and practical functioning
- Custom selection of menu favourites and material default settings
- Cutting and pasting in 2D and 3D, scaling in 2D from any background image
- Mirroring of individual building components



Wood Schedules

- Wood schedules for the carpenter or the sawmill, with optimization of roof assembly and rafter schedule, as well as a schedules of profiles with metal fasteners
- Material lists with extensive functional capability, such as filtering according to type of construction element, self-defined sorting sequences, and manual post-production adjustment,
- Pricing for all lists at the touch of a button



Construction Details & Working Drawings

- 2D drawings for woodworking, plan views, roof sections, building sections, and elevations with automatic dimensioning and labelling, plus free dimensioning options
- Separate display/hide for length of roof edges
- 3D area calculation to produce 3D surfaces incl. 2D plans with automatic dimensioning
- 2D elements can be stored and modified
- All details can be generated at the touch of a button



Interfaces

- Import/Export: Nemetschek Allplan 2011, ArCon, 2D/3D DXF
- Export: cLines, Vicado Plan, MBA
- Print realistic 3D views generated in JPG/BMP or PDF
- Dimensional interface with VisKalk calculation software, for using the dimensions to produce bid tenders and invoices



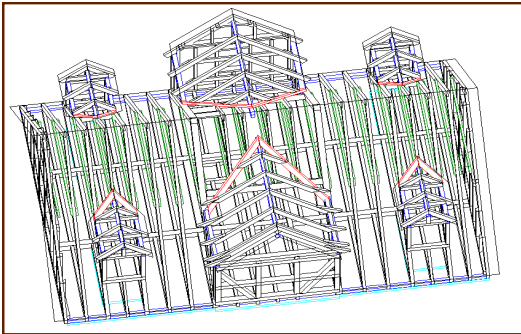
System Requirements

- Minimum hardware configuration: 1500MHz Processor, 512 MB RAM memory, graphic card with min. 128 MB memory, ca. 300 MB available memory on hard drive
- Minimum software configuration: Vista 7



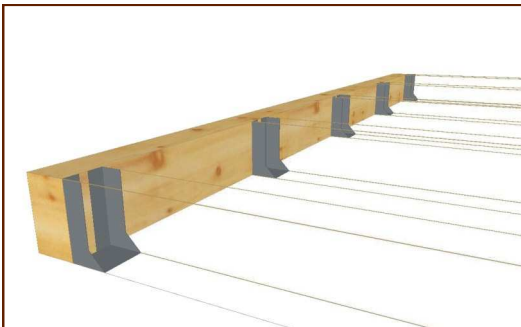
Perfect & fast joinery

- Generate a roof in just six steps with help of the integrated roof assistant
- Alternately input the project using your own floor plan
- All profile settings for the roof may be determined with the aid of a user-friendly dialogues to select roof pitch, projections, or the various sections of roof members (such as rafters, purlins, chords, ridge ties)
- View of the roof tile layout and calculation of exact coverage width
- Skylights and chimneys with automatic modifications
- Follow-up editing of all roof surfaces



Generate roof dormers with assistants

- Separate dormer assistant with multiple dormer profiles such as: gabled dormers, hipped dormers, shed dormers, trapezoidal dormers, triangular dorms, with custom layout parameters
- All changes automatically executed by directly setting dormer in the roof plane, generating posts and sills in one step
- Automatically generate wood member selection for eyebrow dormers and round dormers



Intuitively set header & rafter locations

- Design joist and rafter layout by selecting fixed or variable centreline spacing
- Generate joist layout horizontally or in any plane
- Efficiently generate roof design with the aid of various ways to copy plotted rafter layouts



Custom structural design

- Complex structures with custom wood or steel beams at any depth
- Modelling wood and steel construction functions in the same way, enabling the user to work consistently and intuitively
- Extensive catalogues of standard cross-sections available for selecting steel beams
- Generate curved wood members

Wood joinery details

- Achieve highly accurate preliminary designs for fabrication by locating a range of wood joints
- Among the possibilities are the positioning of beam end profiles, splices, dowels, dovetail tenons, gerber joints, setting boards with nuts and splices, etc.
- Selection of building components in 3D by pulling up a three-dimensional volume for further development

